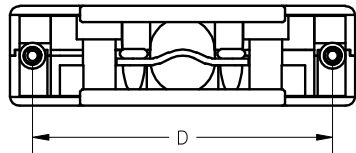
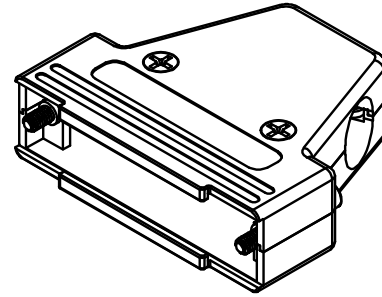
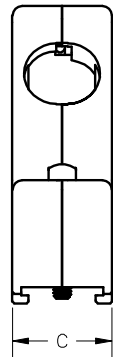
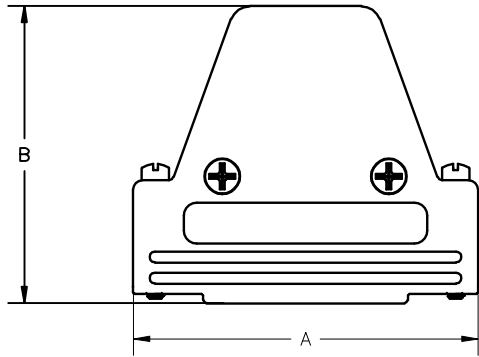
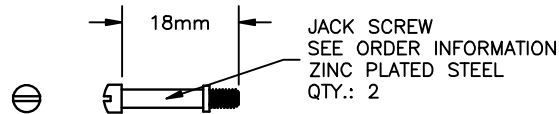
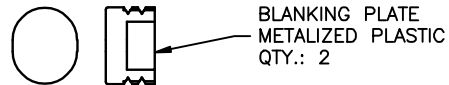
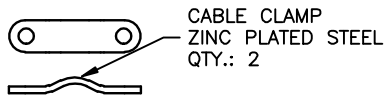


| REV | DATE | DESCRIPTION | APP |
|-----|-----------|-------------|-----|
| A | 07-DEC-15 | ECN 0781 | |
| B | 05-NOV-24 | ECN 0851 | |
| | | | |



DIMENSIONS

| | |
|-----------------|---------------|
| A: 2.106 ±0.051 | [53.50 ±1.30] |
| B: 1.780 ±0.051 | [45.20 ±1.30] |
| C: 0.591 ±0.047 | [15.00 ±1.20] |
| D: 1.852 ±0.010 | [47.04 ±0.25] |

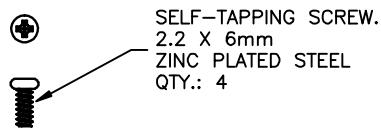
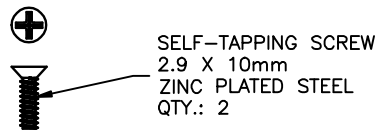


ORDER INFORMATION

| PART NUMBER | JACK SCREW THREAD TYPE |
|---------------|------------------------|
| MHETRIM25MK | #4-40 UNC CLASS 2A |
| MHETRIM25M25K | M2.5 X .45mm PITCH |
| MHETRIM25M3K | M3 X .5mm PITCH |

NOTES:

1. COVER MATERIAL: ABS
2. COVER FINISH: NICKEL OVER COPPER
3. OPERATING TEMPERATURE: -55°C TO +110°C
4. MAX. CABLE O.D.: 0.512 Inches [13mm]



| UNLESS OTHERWISE SPECIFIED | SIGNATURES | DATE | Northern Technologies <small>THIS DRAWING IS THE PROPERTY OF NORTHERN TECHNOLOGIES AND SHOULD NOT BE REPRODUCED WITHOUT NORTHERN TECHNOLOGIES WRITTEN PERMISSION.</small> | | |
|---|---------------|-----------|--|---------------|----------------------|
| 1. DIMENSIONS IN INCHES [MM] 2. TOLERANCE: AS SHOWN 3. ANGLES ±1° | DRAWN Luis C. | 22-JUN-11 | PART NUMBER SEE ORDER INFORMATION | | |
| | CHECKED JSD | 22-JUN-11 | DESCRIPTION CMP 25 3-WAY EXIT COVER KIT | | |
| | ENG | | SHEET 1 | CODE 7100_272 | DWG NO. 7100-500-272 |
| | ISSUED | 29-JUN-11 | SCALE N.T.S. | SHEET 1 OF 1 | |