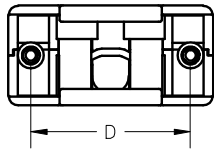
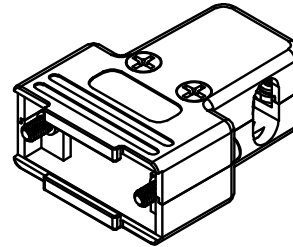
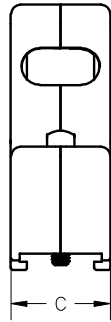
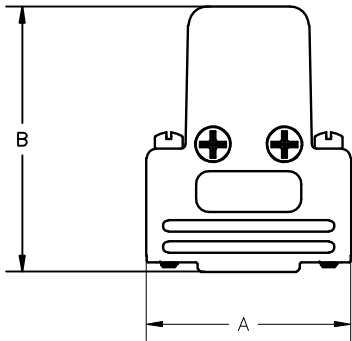
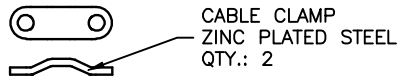


REV	DATE	DESCRIPTION	APP
-	17-NOV-14	ECN 0756A	
A	31-JUL-15	ECN 0779	
B	07-DEC-15	ECN 0781	
C	05-NOV-24	ECN 0851	



DIMENSIONS

A:	1.221 ±0.051	[31.00 ±1.30]
B:	1.630 ±0.051	[41.40 ±1.30]
C:	0.591 ±0.047	[15.00 ±1.20]
D:	0.984 ±0.010	[24.99 ±0.25]



CABLE CLAMP
ZINC PLATED STEEL
QTY.: 2



BLANKING PLATE
METALIZED PLASTIC
QTY.: 2



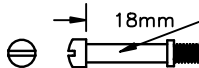
SELF-TAPPING SCREW
ZINC PLATED STEEL
QTY.: 4



SELF-TAPPING SCREW
2.9 X 10mm
ZINC PLATED STEEL
QTY.: 2



JACK SCREW
SEE ORDER INFORMATION
ZINC PLATED STEEL
QTY.: 2



ORDER INFORMATION

PART NUMBER	JACK SCREW THREAD TYPE
MHETRIM09MK	#4-40 UNC CLASS 2A
MHETRIM09M25K	M2.5 X .45MM PITCH
MHETRIM09M3K	M3 X .5MM PITCH

NOTES:

1. COVER MATERIAL: ABS
2. COVER FINISH: NICKEL OVER COPPER
3. OPERATING TEMPERATURE: -55°C TO +110°C
4. MAX. CABLE O.D.: 0.512 Inches [13mm]

THIS IS A CONTROLLED DOCUMENT AND IS SUBJECT TO CHANGE. CONTACT NORTHERN TECHNOLOGIES ENGINEERING FOR THE LATEST REVISION.

UNLESS OTHERWISE SPECIFIED	SIGNATURES	DATE	Northern Technologies		THIS DRAWING IS THE PROPERTY OF NORTHERN TECHNOLOGIES AND SHOULD NOT BE REPRODUCED WITHOUT NORTHERN TECHNOLOGIES WRITTEN PERMISSION.
1. DIMENSIONS IN INCHES [MM] 2. TOLERANCE: AS SHOWN 3. ANGLES ±1'	DRAWN Luis C.	22-JUN-11	PART NUMBER SEE ORDER INFORMATION		
	CHECKED JSD	22-JUN-11	DESCRIPTION CMP 09 3-WAY EXIT COVER KIT		
	ENG		SHEET 1	CODE 7100_270	DWG NO. 7100-500-270
	ISSUED	29-JUN-11	SCALE N.T.S. SHEET 1 OF 1		